



# A day in the life of an educator's handheld



## Presentation

- Follow an educator throughout a regular work day
- Short video clips
- Overview of applications
- Web page:
  - <http://kathyschrock.net/dayinthelife/>

©2004, Kathy Schrock. All rights reserved.



## Production team

- Written and produced by Kathy Schrock
- Videographers
  - Rockwell Schrock Mary Stack
  - John Krenik Ginny Ogden
- Starring
  - Kathy Schrock
  - Students James, Rachel and Melissa from Nauset Middle School, Orleans, MA

©2004, Kathy Schrock. All rights reserved.



## Palm OS Handheld

- Tungsten C
  - 802.11b connectivity
  - Built-in thumb board
  - Fast processor
  - Lots of memory
- Tungsten T3
  - Stereo audio
  - Stretchable



©2004, Kathy Schrock. All rights reserved.



## Alternatives



Palm to phone cable



Enfora LAN Portfolio



Kyocera 7135

©2004, Kathy Schrock. All rights reserved.



## For this presentation



Linksys wireless access point



Handheld with 802.11b connectivity

©2004, Kathy Schrock. All rights reserved.

## Overview of format

### 5:00-6:00 am

- Wake up
- Exercise
- Read newspaper

**Video**

### 5-6 am: Applications

- Wake up- Big Clock
- Exercise- RealOne Player
- Newspaper- Avanti

**Applications**

### Big Clock

**Explanation**


### RealOne Player

**Explanation**

©2004. Kathy Schrock. All rights reserved.

## 5:00-6:00 am

- Wake up
- Exercise




©2004. Kathy Schrock. All rights reserved.

## 5-6 am: Applications

- Wake up- Big Clock
- Exercise- RealOne Player
- Exercise- Sony Portable Speakers

©2004. Kathy Schrock. All rights reserved.

## Big Clock



©2004. Kathy Schrock. All rights reserved.

## RealOne Player

**Title:** All I Have To Do Is Dream  
**Artist:** Christine Lavin  
**Album:** Beau Woes and Other Problems  
**Genre:** Folk  
**Track #:** 10  
**Format:** 128k Mp3  
**Size:** 2.7MB  
**Filename:** All I Have To Do Is Dream - A Summer Song.mp3

Done



©2004. Kathy Schrock. All rights reserved.

## Sony Portable Speakers

### Sony Personal Travel Speakers

- (SRS-T55)
- Plugs into headphone jack
- Fold up for easy carrying
- Uses 4 AA batteries
- \$50



©2004. Kathy Schrock. All rights reserved.



## 6:00 – 7:00am

- Read newspaper
- Check e-mail
- Check task list
- Make shopping list



©2004. Kathy Schrock. All rights reserved.



## 6-7 am: Applications

- Newspaper- Avantgo or WebPro
- Email- EudoraMail
- Tasks- ToDo
- Shopping list- HandyShopper

©2004. Kathy Schrock. All rights reserved.



## AvantGo and WebPro



AvantGo

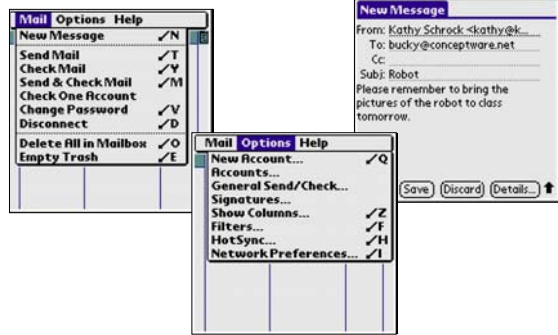


WebPro Browser

©2004. Kathy Schrock. All rights reserved.



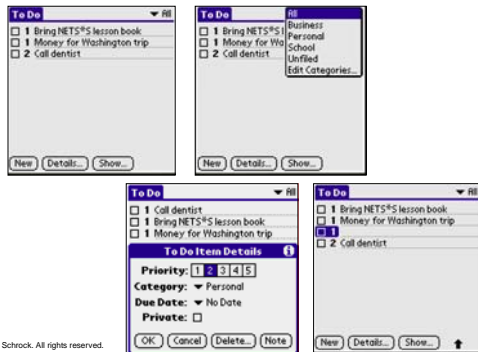
## EudoraMail



©2004. Kathy Schrock. All rights reserved.



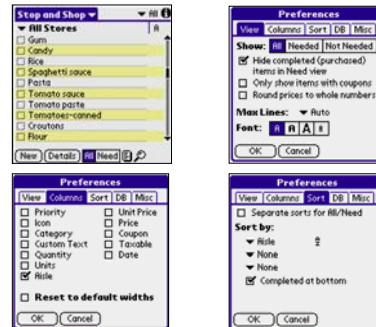
## To Do List



©2004. Kathy Schrock. All rights reserved.



## Handy Shopper



©2004. Kathy Schrock. All rights reserved.



## 7:00 – 8:00 am

- Audiotapes
- Staff meeting



©2004. Kathy Schrock. All rights reserved.



## 7-8 am: Applications

- Audiotapes:
  - RealOne Player
  - Stereo hardware
- Staff meeting: Keyboard



©2004. Kathy Schrock. All rights reserved.



## 8:00 – 9:00 am

- Homework collection
- Signed note
- Lunch count
- Lesson agenda
- Waterfall beaming



©2004. Kathy Schrock. All rights reserved.



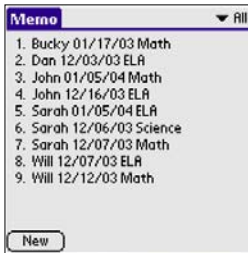
## 8-9 am: Applications

- Homework collection- MemoPad
- Signed note- NotePad
- Lunch count- SmartList
- Lesson agenda- MemoPad

©2004. Kathy Schrock. All rights reserved.



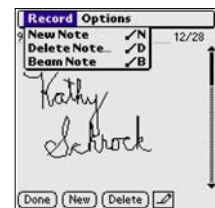
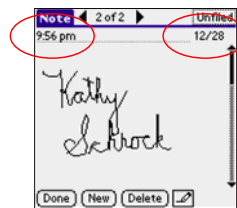
## MemoPad: HW



©2004. Kathy Schrock. All rights reserved.



## NotePad: Parent note



©2004. Kathy Schrock. All rights reserved.

## SmartList to Go: Lunch

**SmartList to Go: Lunch**

**Actions:** New Record, Duplicate Record, Delete Record, Print/Export Layout, Print Record, Export Record, Beam Record.

**SmartList To Go:** Date, Hot lunch, Salad, Ice cream, Milk only.

**SmartList Tools:** Design Fields, Design Forms, Design Views, Design Lists, Find, Filtered Operations, Reports/Statistics, Print/Export, Auto-Size All Columns, Preferences.

©2004. Kathy Schrock. All rights reserved.

## Memo Pad: Agenda

**Memo 1 of 1** Agendas

2/1/04 Reading

Learn: Learning the "pig sound" to help us to learn five short i words.

Do: Warm-up, word lines, slates, dictation, outlaws, step-by-step

Check: circle all the i words in the Tin Man

HW: Read Tim Min to a parent

©2004. Kathy Schrock. All rights reserved.

## 9:00 – 10:00 am

- Social studies
  - Cost of goods
- Science
  - Weight on other planets

©2004. Kathy Schrock. All rights reserved.

## 9-10 am: Applications

- Cost of goods: Inflation Master
- Weight on other planets: Cells

©2004. Kathy Schrock. All rights reserved.

## Inflation Master

Year 1	Amt 1	Year 2
1	2	3
4	5	6
7	8	9
C	0	

Calc Amt 2

10000

Year 1	Amt 1	Year 2
1	2	3
4	5	6
7	8	9
C	0	

Calc Amt 2

649110

©2004. Kathy Schrock. All rights reserved.

## Cells

Planet	Weight
1 Planet 1	100
2 Mercury	378
3 Pluto	6.7
4 Moon	14.4
5 Mars	37.7
6 Jupiter	236.4
7 Saturn	186.4
8 Uranus	88.9

Planet weight

©2004. Kathy Schrock. All rights reserved.



## 10:00 – 12:00 pm

- Math lesson- Order of operations
- Art project
- ELA lesson- Homophones



©2004. Kathy Schrock. All rights reserved.



## 10am-12 pm: Applications

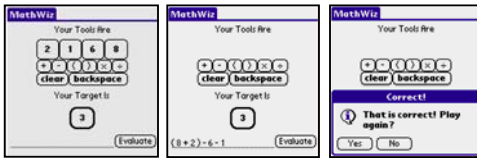
- Math order of operations: MathWiz
- Art project: Tessellation
- ELA homophone lesson: Sketchy

©2004. Kathy Schrock. All rights reserved.



## MathWiz

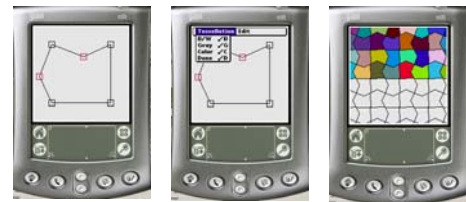
- Students are presented with 4 random numbers between 1 and 10 and given a 5<sup>th</sup> random number
- Students must use the math operations to produce the target answer



©2004. Kathy Schrock. All rights reserved.



## Tessellation



©2004. Kathy Schrock. All rights reserved.



## Sketchy



©2004. Kathy Schrock. All rights reserved.



## 12:00 – 1:00 pm

- Lunch curriculum meeting



©2004. Kathy Schrock. All rights reserved.



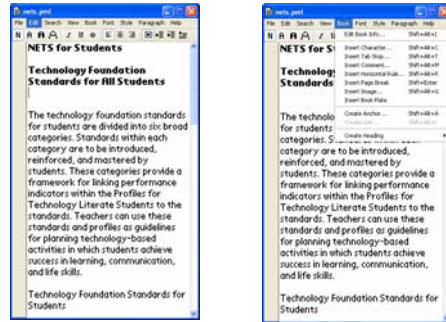
## 12-1 pm: Applications

- Lunch curriculum meeting
  - Palm eBook Studio
  - Palm Reader
  - E-book of standards
  - Palm presentation device

©2004. Kathy Schrock. All rights reserved.



## Palm eBook Studio

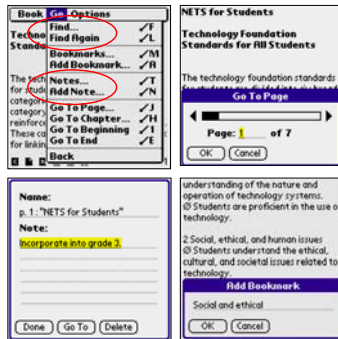


©2004. Kathy Schrock. All rights reserved.



## ISTE NETS\*S in PalmReader

understanding of the nature and operation of technology systems.  
 ⓐ Students are proficient in the use of technology.  
 2. Social, ethical, and human issues  
 ⓐ Students understand the ethical, cultural, and societal issues related to technology.  
 ⓐ Students practice responsible use of technology systems, information, and software.  
 ⓐ Students develop positive attitudes:



©2004. Kathy Schrock. All rights reserved.



## Handheld presentations



Margi Presenter-to-Go

iGo Pitch Duo

©2004. Kathy Schrock. All rights reserved.



## 1:00 – 2:00 pm

- Computer class
  - Storyboard
  - Photos
  - Movie



©2004. Kathy Schrock. All rights reserved.



## 1-2 pm: Applications

- Storyboard: PicoMap
- Photos: Veo Photo Traveler
- Movie: Kinoma Producer/Player

©2004. Kathy Schrock. All rights reserved.

## PicoMap

©2004. Kathy Schrock. All rights reserved.

## VeoTraveler

©2004. Kathy Schrock. All rights reserved.

## Kinoma Player and Studio

©2004. Kathy Schrock. All rights reserved.

## 2:00 – 3:00 pm

- PE
- Consumer Science

©2004. Kathy Schrock. All rights reserved.

## 2 – 3 pm: Applications

- PE: Stopwatches
- Consumer Science: Converter

©2004. Kathy Schrock. All rights reserved.

## Stopwatches

©2004. Kathy Schrock. All rights reserved.

## Converter

©2004. Kathy Schrock. All rights reserved.

## 3:00 – 4:00 pm

- Study group

©2004. Kathy Schrock. All rights reserved.

## 3-4 pm: Applications

- Study Group
  - Splash
  - BooksLog

©2004. Kathy Schrock. All rights reserved.

## GSS Splash

- Personalized splash screen shown when you turn off your handheld
- Also shows handheld "name"

©2004. Kathy Schrock. All rights reserved.

## BooksLog

©2004. Kathy Schrock. All rights reserved.

## 4:00 – 5:00 pm

- Grocery store
- Video store

©2004. Kathy Schrock. All rights reserved.



## 4-5 pm: Applications

- Grocery store: Handy Shopper
- Video store: MovieTracker

©2004. Kathy Schrock. All rights reserved.



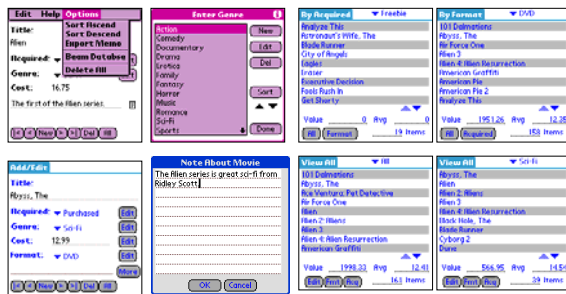
## Handy Shopper



©2004. Kathy Schrock. All rights reserved.



## Movie Tracker



©2004. Kathy Schrock. All rights reserved.



## 5:00 – 6:00 pm

- Recipe
- Weather
- Shopping



©2004. Kathy Schrock. All rights reserved.



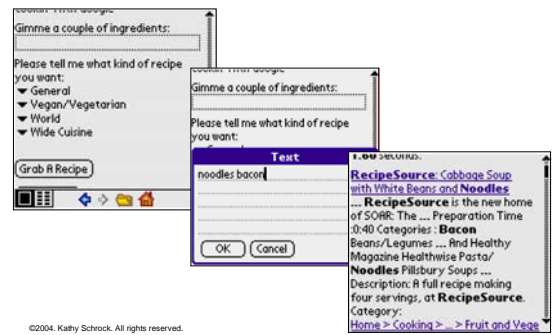
## 5-6 pm: Applications

- Recipe: Goo Cookin'
- Weather/Shopping: WebPro Browser

©2004. Kathy Schrock. All rights reserved.



## Cookin' With Google



©2004. Kathy Schrock. All rights reserved.

## WebPro

©2004. Kathy Schrock. All rights reserved.

## 6:00 – 7:00 pm

- Correcting
- Blogging
- Planning

©2004. Kathy Schrock. All rights reserved.

## 6-7 pm: Applications

- Correcting: Memo Pad
- Blogging: motime.com
- Planning: ThoughtManager

©2004. Kathy Schrock. All rights reserved.

## Blog: handhelds.motime.com

Reading the Web log postings      Sending a new posting via e-mail

©2004. Kathy Schrock. All rights reserved.

## Thought Manager

©2004. Kathy Schrock. All rights reserved.

## 7:00 – 9:00 pm

- Television
- Reading

©2004. Kathy Schrock. All rights reserved.



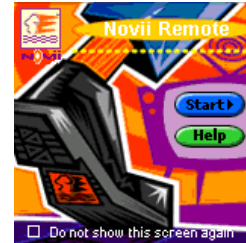
## 7-9 pm: Applications

- **Television: NoviiRemote**
  - NoviiRemote
  - Wireless TV Guide site
- **Reading: Palm Reader**

©2004. Kathy Schrock. All rights reserved.



## NoviiRemote



©2004. Kathy Schrock. All rights reserved.



## Wireless TV Guide Site

The screenshot shows a 'Main Menu' with options for 'TV Listings', 'TV PICKS Insider', and 'Provider'. A 'TV Listings' window is open, displaying a list of programs for 1/12/2004 at 10:00 PM, including 'American Experience', 'COMTV Sports Pulse', 'WBZ CSI: Miami', 'WCVB', 'WLNE', and 'WHDH'. A 'Close Up' window for 'American Experience' is also visible, showing details like 'Ch 2 WGBH', 'Start 10:00PM Mon, 1/12', '90 Minutes', 'Rated: TV-PG', and 'Category: other'. A 'Provider' window shows 'Eastham - Comcast Cable' and 'zipcode 02642'.

©2004. Kathy Schrock. All rights reserved.



## PalmReader



©2004. Kathy Schrock. All rights reserved.



## 9:00 pm


- **Lights out!**



©2004. Kathy Schrock. All rights reserved.



## Handhelds in other occupations



## Civil Engineering

Aquifer Monitoring Software

Task and Project Management Software

CAD



## Healthcare

Field Patient Data Collection

English-Spanish Medical Dictionary

Drug Reference Tool

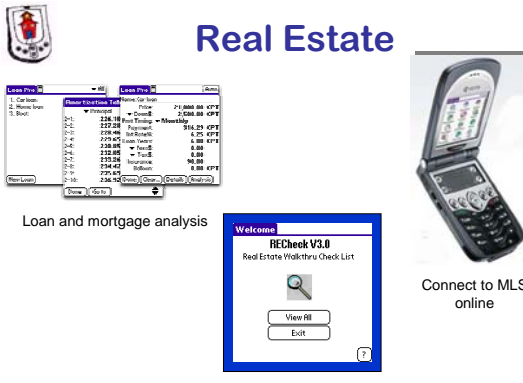


## Farming/Agriculture

Boundaries, soil samples, and field data

GPS to guide tractors

Data collection



## Real Estate

Loan and mortgage analysis

Walk-through checklist

Connect to MLS online



## Building Trades

Wireless field deployment with GPS, templates, etc.

Job quote software

Specialized calculators




## Business Marketing

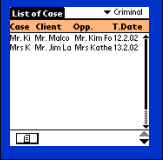
TV/VCR/DVD remote

Presenter-to-Go

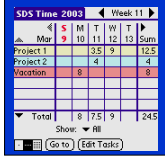
Meeting manager



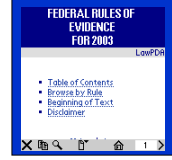
## Attorney



Client and case information



Billable hours



Law reference tool



## Police Officer




Incident management




Online database search




Check e-mail




## Food Service



Inventory control




Food safety with temperature probes





Ordering assistant




## Good books



Caughlin, Janet and Tony Vincent.  
*Handhelds for teachers and administrators.*  
Tom Snyder, 2003.

Midge Frazel and Joe Souza.  
*Tips and tricks for using handhelds in the classroom.* Teacher Created Materials, 2003.

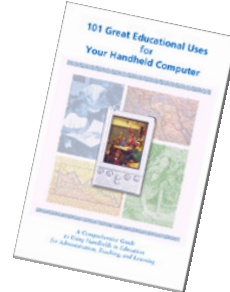




Michael Curtis, et.al..  
*Palm handheld computers: a complete resource for classroom teachers.* ISTE, 2003.



Karen Fasimpaur.  
*101 great educational uses for your handheld computer.* K12 Handhelds, 2003.



Jim Hirsch, Mary Hewett, and Candy Atwood.  
*Palmtops: Computing @ every student.* FTC, 2002.



## The End

Online support page:  
<http://kathyschrock.net/dayinthelife/>

Questions?  
[kathy@kathyschrock.net](mailto:kathy@kathyschrock.net)